



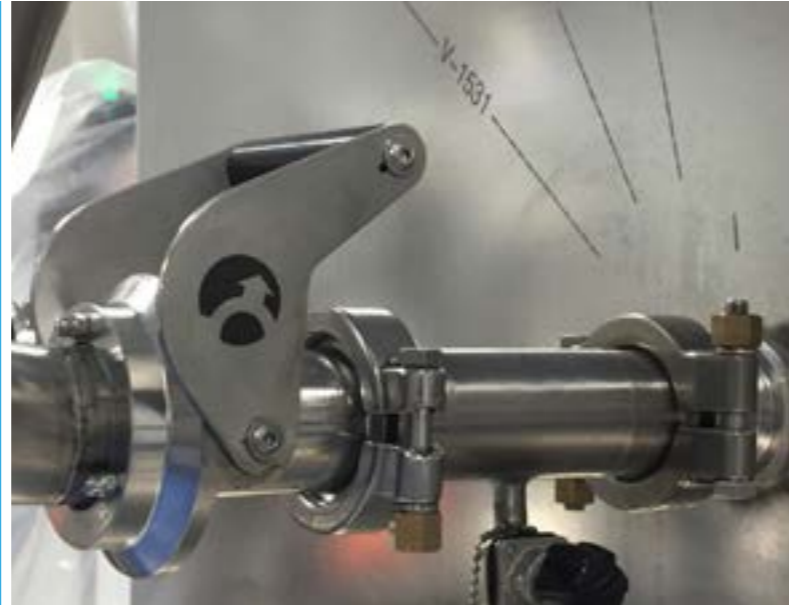
BOCLOCK

THE SMART AND SAFE
CONNECTOR FOR YOUR
PROCESS INSTALLATIONS

BocLock is a connection system for securing process connections both from a mechanical point of view and from an automation point of view. This system is intended for any hygienic application requiring frequent connections and disconnections; it can be used on rigid saddles or hoses with the same level of security. Thanks to RFID technology, a multicolored indicator continuously indicates to the operator the state of the connection (not used, awaiting connection, closed and sealed, dirty connection, clean, incompatible, etc.) The mechanical design of the connector also presents many advantages.

IMPROVED ERGONOMICS

- ✓ Quick and ergonomic operation, requiring no tools and minimal effort, and without risk of the joint falling
- ✓ Ease of use for the operator : one handed operation for fitting and closing the connector
- ✓ Reduction of MSDs (musculoskeletal disorders)
- ✓ Time-saving : significantly reduced handling time (15 seconds to cycle the BocLock versus 2 minutes on average for a conventional connector)



MECHANICAL SAFETY

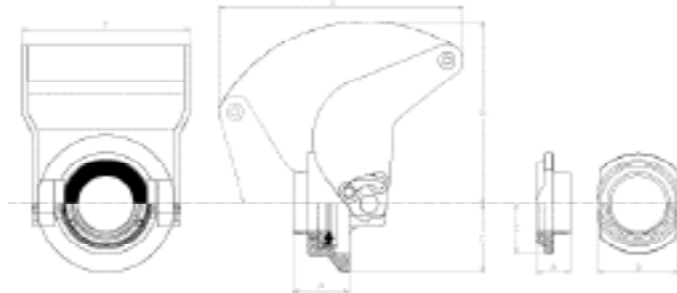
- ✓ Risk of projection towards the operator eliminated
- ✓ Guarantee of correct alignment of the clamp joint
- ✓ Increase in the service life of the joint, due to the reproducibility of the joint tightening : the joint is always compressed with the same pressure
- ✓ The tightening torque of the joint becomes a qualifiable value

Boclock with handle on the TP side for suction rod (reverse BocLock)



CHARACTERISTICS

- ✓ Tri-clamp joint with FDA and USP VI certificates
- ✓ Traceability: marking of lot number or series
- ✓ Parts in contact with the product (standard): 316L stainless steel 1,4404, Ra ≤ 0.4µm (EP optional), with material certificate according to 3.1
- ✓ Other stainless steel grades available (AL-6XN; 316Ti; 904L)
- ✓ Handle: food-grade plastic with (or without) integrated RFID chip - stainless steel handle also available
- ✓ Dimensional standards : SMS (ISO2037), ISO (ISO1127), OD (BS4825), DIN (DIN11850), ASME BPE



Transfer panel for raw material introduction and sample taking with cleaning in place of hoses and rods



PROCESS SAFETY

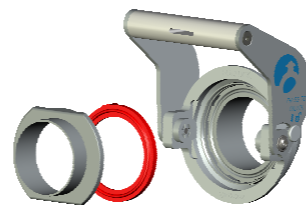
- ✓ Secured process thanks to RFID chips: elimination of the risk of error, especially in sensitive environments
- ✓ Visual guidance for operators thanks to the RFID detection indicators
- ✓ Management in supervision of the sanitary condition of flexible and mobile circuits: clean, dirty, sterile, compatible or not
- ✓ ATEX certified

BOCLOCK - female part (ref. BLPF)
Dimensions (mm)

DN	A	B	C	D	E
20-40	35,4	115	43,5	107	156
50	35,4	115	50,3	107	156
65	35,4	115	57	120,5	156
80	35,4	150	69	148	201
100	35,4	150	78	162	201

BOCLOCK - male part (ref. BLPM)
Dimensions (mm)

DN	A	C	D
20-40	30	32	51
50	30	39	64
65	30	46	78
80	30	53	92
100	30	67	120



These specifications are subject to change and we reserve the right to modify them without prior notice.

REINFORCED HYGIENE

- ✓ BocLock tightness ensured by a standard aseptic tri-clamp joint
- ✓ BocLock can be integrated into an existing system thanks to its hygienic adapters
- ✓ Stainless steel construction: autoclavable assembly

Transfer panel converted to BocLock version (use of clamp / BocLock adapters) to keep the original TP





Boccard Food & Ingredients

Route de Saint-Méen,

35360 Montauban-de-Bretagne

Phone : +33 2 99 06 34 70

food@boccard.com

Technologies & Services



OPERATE & MAINTAIN

Installation and commissioning

Spare parts

On site troubleshooting

Remote troubleshooting

Predictive maintenance



UPGRADE & EXTEND

Process upgrades

Automation upgrades

Plant extensions

Production lines extensions

Modernizations



OPTIMIZE & BOOST

Performance audits

Remote monitoring

Performance tools

Equipment tests

Training services

CONTACT US

Boccard Life Solutions

www.boccard.com



We design, manufacture, assemble and install turnkey processing solutions for our customers worldwide who transform raw materials into products for people's direct consumption.

That is why our centers of excellence (Food&Ingredients, Cosmetics & Hygiene and Brewery& Distillery) are committed to achieving the highest levels of quality and safety in over 100 countries, while ensuring optimal productivity to serve demanding markets.

Our experts in Process Intelligence and Project Management work on a partnership basis with companies of all sizes, including major global players, to build new facilities or upgrade existing systems to meet and surpass key performance indicators: product excellence and consistency, efficient time-to-market, responsiveness and flexibility.

In everything we do, our goal is to provide you with the best process experience, now and in the future.